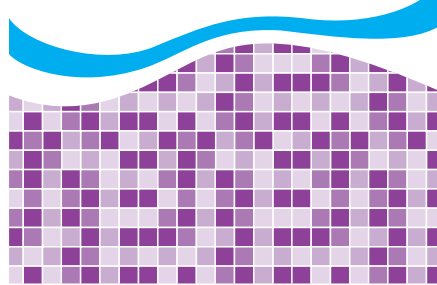


POOL SEASON[®]



PHOSPHATE CONTROL

- Quickly Lowers Phosphate Levels in Swimming Pools
- Use Weekly to Maintain Low Phosphate Levels

1 Quart
Treats 20,000 Gallons
of Pool Water

KEEP OUT OF REACH OF CHILDREN
DANGER

Causes severe skin burns and eye damage.

Read all Precautionary Statements and
First Aid on back panel before use.

NET CONTENTS 1 QUART (946 ml)

APPROVED

By Annette Niemiec at 12:40 pm, Apr 06, 2022

APPROVED

By RICK HANLON at 12:01 pm, Apr 07, 2022

DANGER: Causes severe skin burns and eye damage. Wear rubber gloves and safety glasses if eye contact is possible. Keep out of reach of children. Contains: Lanthanum chloride.

FIRST AID:

In case of contact with eyes: Immediately flush eyes with plenty of water for at least 15 minutes. Remove contact lenses, if present and easy to do. Continue rinsing. Get medical attention if irritation develops and persists.

In case of contact with skin: Take off contaminated clothing and wash before reuse. Wash with plenty of soap and water. If skin irritation occurs: Get medical advice/attention.

In case of inhalation: Remove victim to fresh air and keep at rest in a position comfortable for breathing. Call a poison center or doctor/physician if you feel unwell. In case of ingestion: Do not induce vomiting. Rinse mouth. If ingestion of a large amount does occur, call a poison control center immediately.

IN CASE OF EMERGENCY CALL: 1-800-255-3924

Have the product container or label with you when calling a poison control center or doctor or going for treatment.

Phosphate Control is a concentrated phosphate remover formulated to reduce high levels of phosphates in pool water. Phosphates enter the water from fertilizer, source water, debris in pool (leaves etc), cosmetic products and lotions and some types of pool chemicals. Weekly additions of **Phosphate Control** are recommended to maintain low levels.

DIRECTIONS FOR USE:

When Phosphate levels are over 100 parts per billion (PPB): First, prior to application, kill visible algae by shocking pool with chlorinated shock and algacide (Peroxide Shock for Biguanide treated pools) according to label directions and then brushing pool surface. Allow the time it takes (days) for the chlorine level to drop below 5 ppm before treating for phosphates.

Start with a clean filter, good water circulation/filtration is critical to getting fast results! Always follow pool equipment manufacturer's direction for operating and cleaning equipment. For pools utilizing sand or D.E. filters, backwash then return to filtering position. For Cartridge filters, start with clean cartridge, clean cartridge if necessary prior to application. (Important! Note starting pressure of system when filter is clean).

1. Shake **Phosphate Control** bottle well before opening.
2. With filter system running, pour **32 oz. (1 Qt.) per 20,000 gallons** of pool water directly into the skimmer. Continue running for 48 continuous hours, then shut off pump/filter. Backwash filter (Sand and D.E. type filter) or clean cartridge (cartridge type filter) and put back in Filter. Note: temporary clouding of water is normal as the product is working to remove the phosphates.
3. Vacuum phosphate residue from pool bottom to waste (sand/D.E. filters). For pools with cartridge filters vacuum into filter and upon completion clean the cartridge again.
4. Test phosphate level again. Repeat application if phosphate level is still above 1,000 ppb. The goal is to get the level under 100 ppb.

Weekly dosage to maintain low phosphate level throughout the pool season:

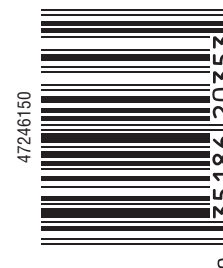
1. Starting the week after the phosphates have been reduced (steps 1-4 above) a weekly maintenance dose is recommended. With filter system running, pour 2 oz. of Phosphate Control per 10,000 gallons of water directly into the skimmer.
2. Repeat each week for the remainder of the pool season to help keep the phosphate level low.

Storage: Store below 120°F and do not allow to freeze.

IGH-50-9130

Manufactured for:
Alliance Trading, Inc.
109 Northpark Blvd, 4th Floor
Covington, LA 70433

CRE032822



32 oz.

30 oz.

28 oz.

26 oz.

24 oz.

22 oz.

20 oz.

18 oz.

16 oz.

14 oz.

12 oz.

10 oz.

8 oz.

6 oz.

4 oz.

2 oz.