

PIPELINE FILTERS® FOR USE UP TO 27,000 GALLONS



NSF

Certified to  
NSF/ANSI/CAN 50

Compact Filters Engineered for  
*Safe and Easy Cartridge Access and Maximum Performance*

## FEATURES

Max commercial 27,000 gallons, 6-hour turn over, calculated per ISPSC

Max residential 108,000 gallons, 12-hour turn over

Compact filters engineered for safe and easy cartridge access

Safe self-aligning removable locking collar/top

Super strength resin for enhanced structural integrity

Self-aligning linking base for parallel filtration systems

Rubber protected stainless steel gauge

Ergonomic pressure relief valve

2" socket x 2½" spigot PVC union connections included

One-year warranty, extendable to three years when installed with a Pipeline Pump

1 per case

8 per pallet

# PIPELINE FILTERS®

**COMPACT FILTERS ENGINEERED FOR  
MAXIMUM SAFETY AND PERFORMANCE**



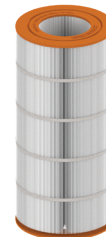
Model # PLF27000



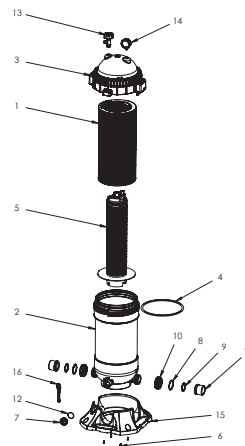
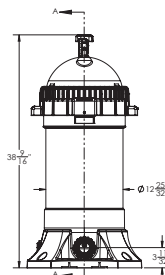
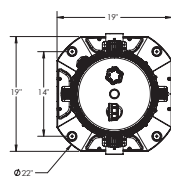
For safe and easy  
depressurization  
Patented

NEW

Now includes a  
drain plug wrench  
and holder



AquaStar's  
Superior Pure  
Pleat Technology  
Cartridge  
Model # PF27000



1. Cartridge, 200 Sq.Ft., Pipeline Filter
2. Housing Assy., 200 Sq.Ft., Pipeline Filter
3. Lid Assy., Pipeline Filter
4. Oring, #453, .275 THK. x 11.975 I.D., EPDM 70A
5. Filter Core Assy., 200 Sq.Ft.
6. #10 X 3/4" LG. Pan Head Phillips, 316 SS, Qty 4
7. Drain Plug, Pipeline Filter
8. Snap Ring, Pipeline Filter, Qty 2
9. Union Gasket, Pipeline Filter, Qty 2
10. Union Nut, 2" Union, Qty 2
11. Union, 2" Socket x 2.5" Spigot, PVC, Qty 2
12. O-Ring, #224, EPDM 70A
13. Relief Valve Assy., Pipeline Filter
14. Pressure Gauge Assy., Pipeline Filter
15. Baseplate, Pipeline Filter
16. Wrench, Pipeline Filter

Pre-2024 filter replacement parts also available:

Base Plate with Screws only, p/n PF2012  
1 per case

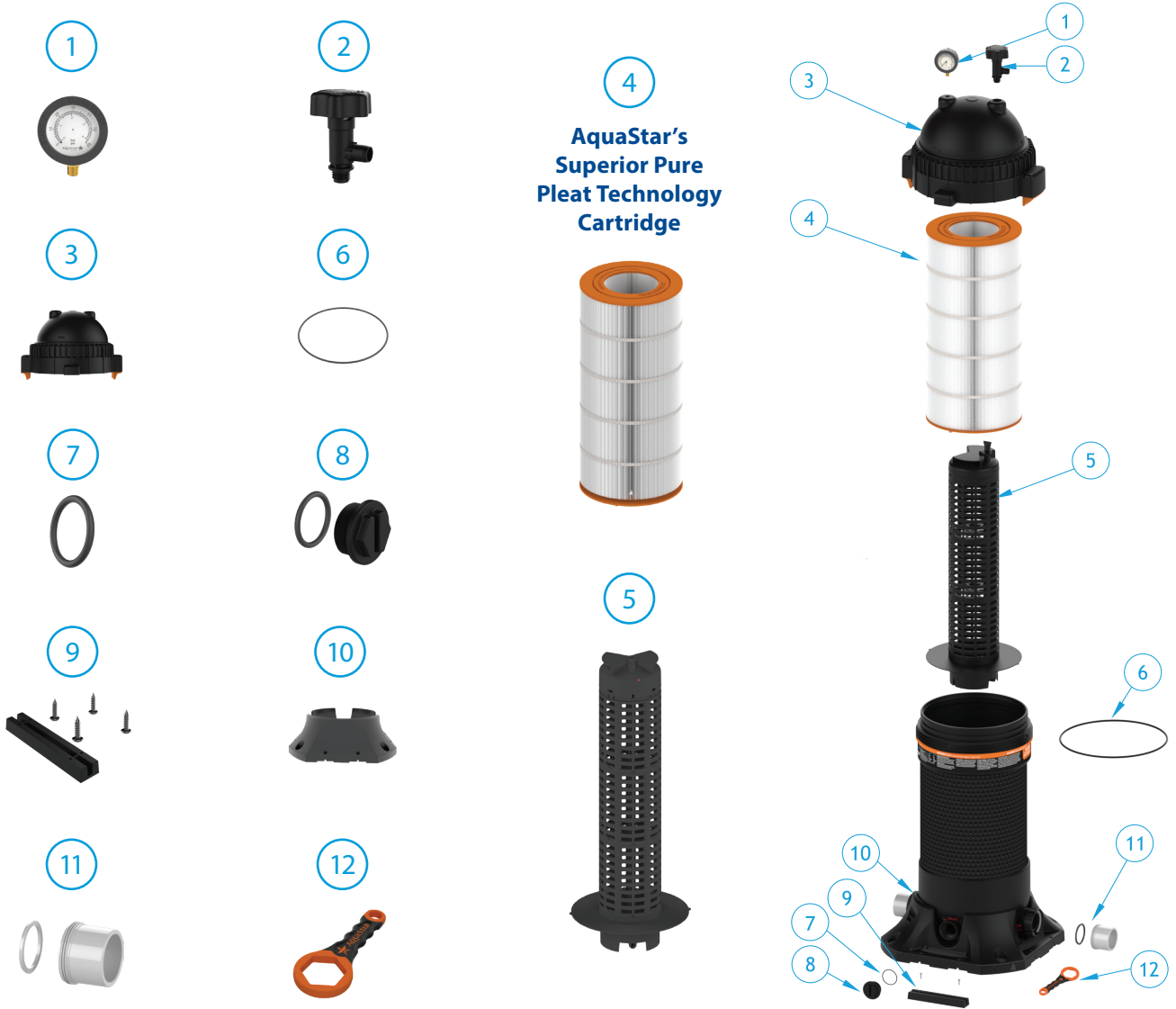
Base cover, p/n PF1008  
5 per case

U.S. Patents [www.aquastarpoolproducts.com/patents](http://www.aquastarpoolproducts.com/patents)

P 877-768-2717 F 877-276-POOL Outside the US: P +1-949-336-1940 F +1-949-336-1940  
info@aquastarpoolproducts.com www.aquastarpoolproducts.com CS061-032824

# REPLACEMENT PARTS FOR MODEL # PLF27000

## PIPELINE FILTERS®



4  
AquaStar's  
Superior Pure  
Pleat Technology  
Cartridge

ITEM NO.	PART NO.	DESCRIPTION
1	PF2011	Pressure Gauge With Boot, Pipeline Filter
2	PF1025	Relief Valve Assembly With O-Ring, Pipeline Filter
3	PF2001	Lid Assembly, Pipeline Filter
4	PF27000	Cartridge Filter Media, 27,000 Gallon, Pipeline Filter
5	PF2005	Filter Core Assembly, 27,000 Pipeline Filter
6	O-RING453	Lid O-Ring, #453, .275" THK. X 11.975" I.D., EPDM 70A
7	O-RING224	Plug O-Ring, #224, .139" THK X 1.734" I.D., EPDM 70A
8	PF2016	Drain Plug With O-Ring, Pipeline Filter
9	PF2017	Plate Link With Screws, Pipeline Filter
10	PF2018	Base Plate With Screws, Pipeline Filter
11	PF2013	Union And Gasket Set, Pipeline Filter
12	PF1050	Wrench, Drain Plug, Pipeline Filter

PIPELINE FILTERS® FOR USE UP TO 35,000 GALLONS



NSF®

Certified to  
NSF/ANSI/CAN 50

Compact Filters Engineered for  
*Safe and Easy Cartridge Access and Maximum Performance*

## FEATURES

Max commercial 35,000 gallons, 6-hour turn over, calculated per ISPSC

Max residential 144,000 gallons, 12-hour turn over

Compact filters engineered for safe and easy cartridge access

Safe self-aligning removable locking collar/top

Super strength resin for enhanced structural integrity

Self-aligning linking base for parallel filtration systems

Rubber protected stainless steel gauge

Ergonomic pressure relief valve

2" socket x 2½" spigot PVC union connections included

One-year warranty, extendable to three years when installed with a Pipeline Pump

1 per case

8 per pallet

## PIPELINE FILTERS®

**COMPACT FILTERS ENGINEERED FOR  
MAXIMUM SAFETY AND PERFORMANCE**



Model # PLF35000



For safe and easy  
depressurization  
Patented

AquaStar's  
Superior Pure  
Pleat Technology  
Cartridge  
Model # PF35000



NEW

Now includes a  
drain plug wrench  
and holder

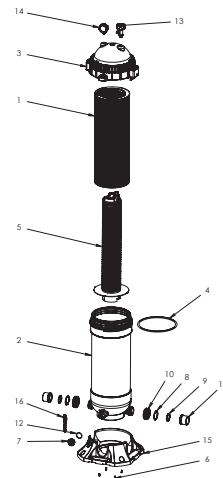
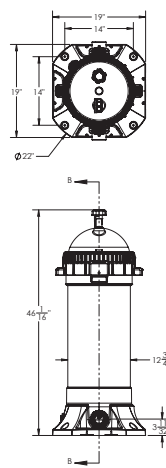


Pre-2024 filter replacement parts also available:

Base Plate with Screws only, p/n PF2012  
1 per case

Base cover, p/n PF1008  
5 per case

U.S. Patents [www.aquastarpoolproducts.com/patents](http://www.aquastarpoolproducts.com/patents)



1. Cartridge Filter Media, 250 Sq. Ft.
2. Housing Assy., 250 Sq.Ft., Pipeline Filter
3. Lid Assy., Pipeline Filter
4. O-Ring, #453, .275 THK. x 11.975 I.D., EPDM 70A
5. Filter, Core Assy., 250 Sq.Ft. Pipeline Filter
6. #10 X 3/4" LG. Pan Head Phillips, 316 SS, Qty 4
7. Drain Plug, Pipeline Filter
8. Snap Ring, Pipeline Filter, Qty 2
9. Union Gasket, Pipeline Filter, Qty 2
10. Union Nut, 2" Union, Qty 2
11. Union, 2" Socket x 2.5" Spigot, PVC, Qty 2
12. O-Ring, #224, EPDM 70A
13. Relief Valve Assy., Pipeline Filter
14. Pressure Gauge Assy., Pipeline Filter
15. Baseplate, Pipeline Filter
16. Wrench, Pipeline Filter

P 877-768-2717 F 877-276-POOL Outside the US: P +1-949-336-1940 F +1-949-336-1940  
[info@aquastarpoolproducts.com](mailto:info@aquastarpoolproducts.com) [www.aquastarpoolproducts.com](http://www.aquastarpoolproducts.com) CS062-032824

# REPLACEMENT PARTS FOR MODEL # PLF35000

## PIPELINE FILTERS®



ITEM NO.	PART NO.	DESCRIPTION
1	PF2011	Pressure Gauge With Boot, Pipeline Filter
2	PF1025	Relief Valve Assembly With O-Ring, Pipeline Filter
3	PF2001	Lid Assembly, Pipeline Filter
4	PF35000	Cartridge Filter Media, 35,000 Gallon, Pipeline Filter
5	PF2003	Filter Core Assembly, 35,000 Pipeline Filter
6	O-RING453	Lid O-Ring, #453, .275" THK. X 11.975" I.D., EPDM 70A
7	O-RING224	Plug O-Ring, #224, .139" THK X 1.734" I.D., EPDM 70A
8	PF2016	Drain Plug With O-Ring, Pipeline Filter
9	PF2017	Plate Link With Screws, Pipeline Filter
10	PF2018	Base Plate With Screws, Pipeline Filter
11	PF2013	Union And Gasket Set, Pipeline Filter
12	PF1050	Wrench, Drain Plug, Pipeline Filter

# PIPELINE FILTERS® PERFORMANCE SPECIFICATIONS

Specifications for PLF27000 and PLF35000 Pipeline Filters®

Model Number	PLF27000	PLF35000
Filter area (sq. ft.)	200	250
Maximum Flow Rate (gpm)	150	200
Residential: Design Filtration Flow Rate* (gpm)	150	200
Public: Design Filtration Flow Rate (gpm)	75	99
Public: Pool 6-Hour Turnover Capacity (gallons)	27,000	35,640
Public: Pool 8-Hour Turnover Capacity (gallons)	36,000	47,520
Residential: 12-Hour Turnover Capacity (gallons)	108,000	144,000
Maximum working pressure (psi)	50	50
Replacement Cartridge Filter (Model #)	PF27000	PF35000
Minimum Vertical Clearance (in.)	61	76

\*Local residential swimming pool building, and energy efficiency codes may specify lower filtration flow rates.

AquaStar Cartridge Filters - PLF27000 & PLF35000  
Head Loss Curve

